



WILLIAM (SMART) KINDERGARTEN (WHAMPOA) (LOCAL STREAM)

Kowloon
City

Address : SHOP G3C(2), G/F, SITE 7, WHAMPOA GARDEN,
HUNG HOM, KOWLOON

Tel. : 2333 2886

Fax. : 2330 3199

Joining
2021/22 KG Education Scheme

School No. 610771

Location No. 0001

School Information	
School Category	Non-profit-making
Student Category	Co-educational
Name of School Supervisor	MS TOO SIU PING FLORA
Name of School Principal	MS TAM CHIU YEE
School Founding Year	1990
Total No. of Permitted Accommodation of Classrooms in Use (Data as of Sept. 2020)	328
Number of Registered Classrooms	8
Outdoor Playground	No
Indoor Playground	Yes
Music Room	Yes
Other Special Room(s) / Area(s)	Physical Area, Mandarin Corner
Total No. of Principal & Teaching Staff (Data as of Oct. 2020) *	26
School Website	http://www.william-inter-kg.edu.hk
Quality Review : Result and Report	Report not available

No. & Qualification of Principal & Teaching Staff (Data as of Oct. 2020) *	
Academic Qualification	
Degree holders	16
Non-degree holders	10
Professional Qualification	
C(ECE) or above	25
Qualified KG teachers	1
Other teacher trainings	0
Qualified assistant KG teachers	0
Others	0

* Excluding staff serving aged 0-2

Teacher to Pupil Ratio (Data as of Oct. 2020)	
Teacher to pupil ratio in morning session	1 : 6.5
Teacher to pupil ratio in afternoon session	1 : 5.7
Ratio includes classes aged 2-3	No

No. of Enrolment (Data as of Oct. 2020)				
	Nursery	Lower KG	Upper KG	Total
AM Session	42	49	48	139
PM Session	18	30	49	97
WD Session	13	8	8	29

Annual Fees (2021 / 22 School Year)				
		Nursery	Lower KG	Upper KG
Annual Fees After Deduction of Government Subsidy (No. of Instalment)	AM Session	\$5,700 (10)	\$5,700 (10)	\$5,700 (10)
	PM Session	\$5,700 (10)	\$5,700 (10)	\$5,700 (10)
	WD Session	\$25,890 (10)	\$25,890 (10)	\$25,890 (10)

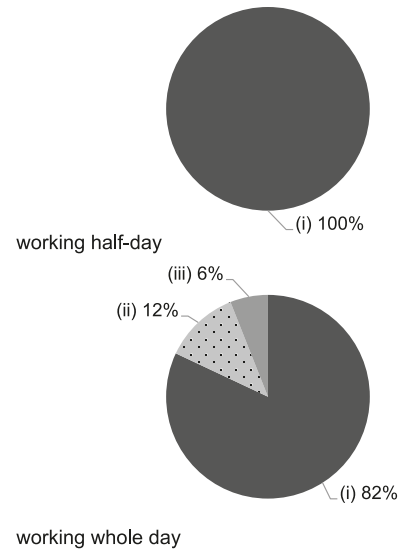
Please refer to the Fees Certificate for details of fees information.

Child Care Services (Data as of Oct. 2020)			
With child care services for children aged 2-3	-	With child care services for children aged under 2	-
Fee level (per annum)	(half - day)	No. of enrolment aged 2-3	0
	(full - day)	Joining Child Care Centre Subsidy Scheme	-
Providing occasional child care services	-	Providing extended hours services	-

Curriculum Details	
Curriculum type : Local	
Curriculum planning	
<p>Based on children's whole person development and matching the direction of educational reform, our curriculum encompasses five developmental objective (namely "Physical", "Cognitive and Language", "Affective and Social", "Aesthetic" and "Moral") and six learning areas. We teach through games which inspires children's exploration, thinking ability, imagination, memory and expression ability. Moreover, positive values and good attitudes are cultivated.</p> <p>We will follow the "Kindergarten Education Curriculum Guide" (2017) to plan curriculum. Children of nursery classes will not be asked to write, and there will not be mechanical copying exercises and drills on calculation.</p>	
Learning / Teaching approach & activities	
<p>To enrich young children's learning experience, we adopt different learning / teaching approaches and activities, which include the Activity Approach, the Thematic Approach, games, outdoor visits, small-group activities, parent-child reading scheme, and project studies.</p>	
Assessment of children's learning experiences	
<p>Through systematic on-going observation and data collection, we report to parents regularly the relevant records and assessments in forms of rating scales, anecdotal records and samples, so that parents understand their children's learning performances and developmental progress.</p>	

Monthly salary range of principal & teaching staff
(Data as of Mar. 2021)

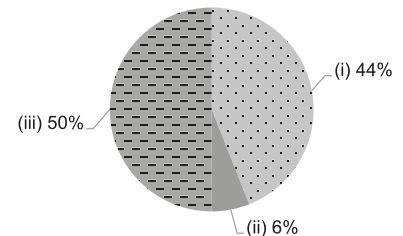
- (i) ≤ \$30,000
- (ii) \$30,001 - \$40,000
- (iii) > \$40,000



School Characteristics	
School vision and mission	
<p>Our school has been striving to provide quality and child centred pre-primary education with bilingual and trilingualism learning environment to nurture children to attain all-round development. Through play-based learning, children's potential and intelligences are developed. Moreover, our philosophy is centered around the holistic development of the CHILD – offering love, care and a professional attitude. C – Creativity H – Happiness I – Intelligence L – Languages D – Development</p>	
Support to students	
<p>Parent meetings for parents and adaptation period for new children; mock primary one and primary school visits to prepare children to get ready for primary school; close contact with parents to know more the growth needs of children, providing appropriate counselling and assistance; cooperate with different organization in the community, well use of the external resources to broaden children's horizons and provide life-wide learning activities.</p>	
Support to non-Chinese speaking (NCS) students	
<p>Received Grant for Support to NCS Students; appoint additional teaching staff / teaching assistants to support NCS students learning Chinese; create an enriched language environment for mastery of the Chinese language; create an inclusive learning environment to facilitate students' integration; facilitate professional development for teachers to develop effective strategies to help NCS students learn Chinese.</p>	
Support to students with special needs	
No information	
Link with parents	
Parent-teacher association : No	
Other activities / communication with parents	
<p>Parents' day, different parent-child activities, sports day, seminars, parental collaboration and parent volunteers.</p>	

Working experience of principal & teaching staff
in pre-primary education
(Data as of Mar. 2021)

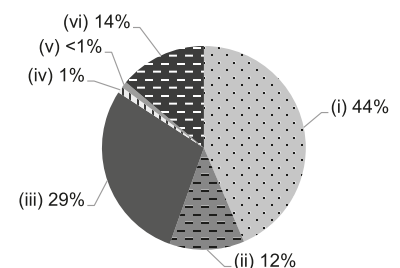
- (i) < 4 years
- (ii) 4 - 7 years
- (iii) > 7 years



2019/20 School Expenditure Information

Expenditure information based on audited account Yes

- (i) salary of principal & teaching staff
- (ii) non-teaching staff salary
- (iii) rent, management fees, rates & government rent
- (iv) teaching resources
- (v) staff training & professional development
- (vi) other expenses



Major Paid Items Reference Price (2020 / 21 School Year)			
Summer uniform	\$230 / set	Winter uniform	\$475 / set
School bag	\$160 / each	Tea and snacks	Nil
Textbooks	Nil	Exercise books/ workbooks	Nil
Stationery	Nil	Bedding items	Nil