



FUN CREATIVE KINDERGARTEN

Sai Kung

Address : G/F, BLOCK 1, FU NING GARDEN, TSEUNG KWAN O,
SAI KUNG, NEW TERRITORIES

Joining
2021/22 KG Education Scheme

School No. 592080

Location No. 0001

Tel. : 2702 7838

Fax. : 2702 7808

School Information	
School Category	Non-profit-making
Student Category	Co-educational
Name of School Supervisor	MS LI PAK YEE
Name of School Principal	MISS WONG MING WAI
School Founding Year	2013
Total No. of Permitted Accommodation of Classrooms in Use (Data as of Sept. 2020)	176
Number of Registered Classrooms	8
Outdoor Playground	Yes
Indoor Playground	Yes
Music Room	Yes
Other Special Room(s) / Area(s)	Library, NCS Teaching room, Playroom
Total No. of Principal & Teaching Staff (Data as of Oct. 2020) *	20
School Website	http://www.funcreative.edu.hk
Quality Review : Result and Report	Meeting the prescribed standards https://www.edb.gov.hk/attachment/tc/edu-system/preprimary-kindergarten/quality-assurance-frame-work/qr/qr-report/Bilok_Creative.pdf

No. & Qualification of Principal & Teaching Staff (Data as of Oct. 2020) *	
Academic Qualification	
Degree holders	9
Non-degree holders	11
Professional Qualification	
C(ECE) or above	16
Qualified KG teachers	4
Other teacher trainings	0
Qualified assistant KG teachers	0
Others	0

* Excluding staff serving aged 0-2

Teacher to Pupil Ratio (Data as of Oct. 2020)	
Teacher to pupil ratio in morning session	1 : 9.8
Teacher to pupil ratio in afternoon session	1 : 5.3
Ratio includes classes aged 2-3	Yes

No. of Enrolment (Data as of Oct. 2020)				
	Nursery	Lower KG	Upper KG	Total
AM Session	32	19	16	67
PM Session	0	0	0	0
WD Session	37	32	23	92

Annual Fees (2021 / 22 School Year)				
		Nursery	Lower KG	Upper KG
Annual Fees After Deduction of Government Subsidy (No. of Instalment)	AM Session	Free	Free	Free
	PM Session	Free	Free	Free
	WD Session	\$6,624 (12)	\$6,624 (12)	\$6,624 (12)

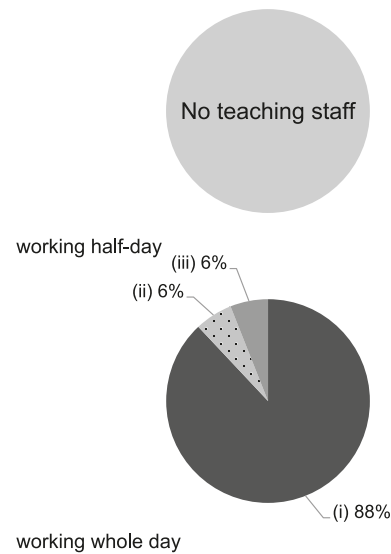
Please refer to the Fees Certificate for details of fees information.

Child Care Services (Data as of Oct. 2020)			
With child care services for children aged 2-3	Yes	With child care services for children aged under 2	No
Fee level (per annum)	\$32,484 (half - day)	No. of enrolment aged 2-3	43
	\$57,924 (full - day)	Joining Child Care Centre Subsidy Scheme	No
Providing occasional child care services	No	Providing extended hours services	No

Curriculum Details	
Curriculum type : Local	
Curriculum planning	
<p>Based on the Kindergarten Education Curriculum Guide 2017 for curriculum planning, a child-centered concept provides lifestyle, sensory exploration and fun games as part of the learning process. The school also brings into play the community resources, continuous optimization of the curriculum.</p> <p>We will follow the "Kindergarten Education Curriculum Guide" (2017) to plan curriculum. Children of nursery classes will not be asked to write, and there will not be mechanical copying exercises and drills on calculation.</p>	
Learning / Teaching approach & activities	
<p>Adopting the life-oriented theme, comprehensive model, and through different areas of learning and activities, children learn through games to observe, analyze, predict and compare, solve problems, put knowledge into practice, and cultivate positive values. The school also designs diversified activities for the young children, such as out-of-school visits, performances, competitions, community exchange activities, so that children can broaden their views.</p>	
Assessment of children's learning experiences	
<p>The continuing assessments of young children which include thematic assessment, comprehensive growth assessment and observation evaluation.</p>	

Monthly salary range of principal & teaching staff (Data as of Mar. 2021)

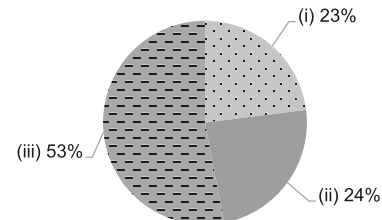
- (i) ≤ \$30,000
- (ii) \$30,001 - \$40,000
- (iii) > \$40,000



School Characteristics	
School vision and mission	
<p>We endeavor to stimulate the unlimited imagination of our children and help them attain balanced and all-round development in physical, psychological, intellectual, social, emotional and moral aspects to lay sound foundation for future learning.</p>	
Support to students	
<p>Student adaptation period, visits to primary schools, activities for adapting to Primary One, uniform team (Little Bee and traffic safety team). Support for the Non-Chinese students for them to easily adapting to the school life. Building a Multicultural Life!</p>	
Support to non-Chinese speaking (NCS) students	
<p>Received Grant for Support to NCS Students; appoint additional teaching staff / teaching assistants to support NCS students learning Chinese; arrange interpretation / translation services; engage NCS parent volunteers to enhance communication between school and parents; create an enriched language environment for mastery of the Chinese language; create an inclusive learning environment to facilitate students' integration; collaborate with non-governmental organisations (NGOs) to create an inclusive learning environment; facilitate professional development for teachers to develop effective strategies to help NCS students learn Chinese; participate in school-based professional support programmes organised by EDB.</p>	
Support to students with special needs	
<p>Joining the On-site Pre-school Rehabilitation Services.</p>	
Link with parents	
<p>Parent-teacher association : Yes</p>	
Other activities / communication with parents	
<p>Parents orientation day, parent-child workshops, parent-child field trips, parent-child reading incentive schemes, class observation for parents, parents meetings, seminars for parents, and parents volunteering support group. Also, we collaborate with social worker to support parents and children.</p>	

Working experience of principal & teaching staff in pre-primary education (Data as of Mar. 2021)

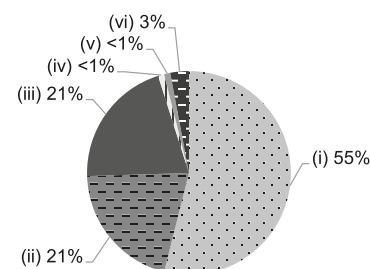
- (i) < 4 years
- (ii) 4 - 7 years
- (iii) > 7 years



2019/20 School Expenditure Information

Expenditure information based on audited account Yes

- (i) salary of principal & teaching staff
- (ii) non-teaching staff salary
- (iii) rent, management fees, rates & government rent
- (iv) teaching resources
- (v) staff training & professional development
- (vi) other expenses



Major Paid Items Reference Price (2020 / 21 School Year)			
Summer uniform	Nil	Winter uniform	Nil
School bag	Nil	Tea and snacks	Nil
Textbooks	Nil	Exercise books/ workbooks	Nil
Stationery	Nil	Bedding items	Nil