



HOMANTIN YANG MEMORIAL METHODIST PRE-SCHOOL

Kowloon
City

Address : UNIT 1, G/F, CHING MAN HOUSE, HOMANTIN ESTATE,
KOWLOON

Tel. : 2242 0678

Fax. : 2242 0838

Joining
2021/22 KG Education Scheme

School No. 565016

Location No. 0001

School Information	
School Category	Non-profit-making
Student Category	Co-educational
Name of School Supervisor	REV LAM SUNG CHE
Name of School Principal	MS FAN SHUK KWAI
School Founding Year	2000
Total No. of Permitted Accommodation of Classrooms in Use (Data as of Sept. 2020)	85
Number of Registered Classrooms	Not applicable
Outdoor Playground	No
Indoor Playground	Yes
Music Room	No
Other Special Room(s) / Area(s)	Training Room, Computer Corner, Parent Resource Library
Total No. of Principal & Teaching Staff (Data as of Oct. 2020) *	9
School Website	http://www.hmtps.org
Quality Review : Result and Report	Meeting the prescribed standards https://www.edb.gov.hk/attachment/tc/edu-system/preprimary-kindergarten/quality-assurance-frame-work/qv/qv-report/HMT_Yang_Methodist.pdf

No. & Qualification of Principal & Teaching Staff (Data as of Oct. 2020) *	
Academic Qualification	
Degree holders	3
Non-degree holders	6
Professional Qualification	
C(ECE) or above	9
Qualified KG teachers	0
Other teacher trainings	0
Qualified assistant KG teachers	0
Others	0

* Excluding staff serving aged 0-2

Teacher to Pupil Ratio (Data as of Oct. 2020)	
Teacher to pupil ratio in morning session	1 : 11.1
Teacher to pupil ratio in afternoon session	1 : 11.1
Ratio includes classes aged 2-3	Yes

No. of Enrolment (Data as of Oct. 2020)				
	Nursery	Lower KG	Upper KG	Total
AM Session	0	0	0	0
PM Session	0	0	0	0
WD Session	22	28	26	76

Annual Fees (2021 / 22 School Year)				
		Nursery	Lower KG	Upper KG
Annual Fees After Deduction of Government Subsidy (No. of Instalment)	AM Session	-	-	-
	PM Session	-	-	-
	WD Session	Free	Free	Free

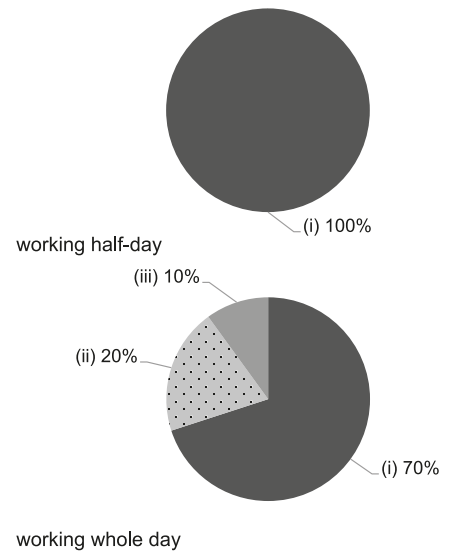
Please refer to the Fees Certificate for details of fees information.

Child Care Services (Data as of Oct. 2020)			
With child care services for children aged 2-3	Yes	With child care services for children aged under 2	No
Fee level (per annum)	(half - day)	No. of enrolment aged 2-3	24
	(\$40,608) (full - day)	Joining Child Care Centre Subsidy Scheme	Yes
Providing occasional child care services	Yes	Providing extended hours services	Yes

Curriculum Details	
Curriculum type : Local	
Curriculum planning	
<p>Our curriculum encompasses diversified activities, which allow children to learn from a relaxing and pleasurable environment. We strive to develop their potential, to foster their initiative to learn and to achieve our objective of whole person education.</p> <p>We will follow the "Kindergarten Education Curriculum Guide" (2017) to plan curriculum. Children of nursery classes will not be asked to write, and there will not be mechanical copying exercises and drills on calculation.</p>	
Learning / Teaching approach & activities	
<p>The school adopts the Project Approach and use child-centred teaching. We pick things that are of interest and of value to children for project work, which ensures in-depth learning. The teacher is available during the process for guidance and to make sure that the children have sufficient opportunity to observe, explore and take the initiative to learn. In the activities, there are opportunities for children to discuss and to share experiences and feeling with others.</p>	
Assessment of children's learning experiences	
<p>We adopt formative assessment and observation to understand a child's progress and to make appropriate adjustments. There is a summative assessment every term.</p>	

Monthly salary range of principal & teaching staff (Data as of Mar. 2021)

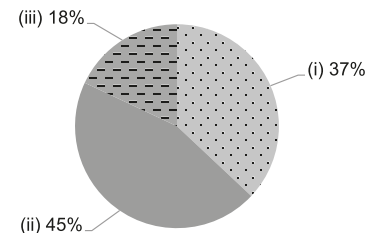
- (i) ≤ \$30,000
- (ii) \$30,001 - \$40,000
- (iii) > \$40,000



School Characteristics	
School vision and mission	
<p>In the spirit of Christ's love, we strive to provide quality pre-primary educational services. We nurture children to attain balanced, all-round development in the domains of spiritual education, ethics, intellect, physique, social skills and aesthetics.</p>	
Support to students	
<p>The school frequently organizes special events such as Parent-child Reading Programs, Planting Activities and Character Cultivation Incentives to develop children's diversified potentials, good character and community awareness. The school also encourages children to participate in various open activities to widen their horizons. Besides, the school organizes primary school visits and co-organizes with primary schools the primary student life experience day for the children to have the concept of how a primary school class is like.</p>	
Support to non-Chinese speaking (NCS) students	
<p>Received Grant for Support to NCS Students; appoint additional teaching staff / teaching assistants to support NCS students learning Chinese; arrange interpretation / translation services; create an enriched language environment for mastery of the Chinese language; create an inclusive learning environment to facilitate students' integration; participate in school-based professional support programmes organised by EDB.</p>	
Support to students with special needs	
<p>Joining the On-site Pre-school Rehabilitation Services.</p>	
Link with parents	
<p>Parent-teacher association : No</p>	
Other activities / communication with parents	
<p>The school's church has multiple service units, senior social workers and educational psychologists to provide parenting and psychological counselling services; We partner with professional groups to organize parenting talks and parent-child workshops to enhance home-school collaboration.</p>	

Working experience of principal & teaching staff in pre-primary education (Data as of Mar. 2021)

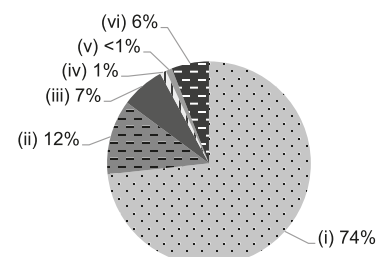
- (i) < 4 years
- (ii) 4 - 7 years
- (iii) > 7 years



2019/20 School Expenditure Information

Expenditure information based on audited account Yes

- (i) salary of principal & teaching staff
- (ii) non-teaching staff salary
- (iii) rent, management fees, rates & government rent
- (iv) teaching resources
- (v) staff training & professional development
- (vi) other expenses



Major Paid Items Reference Price (2020 / 21 School Year)

Summer uniform	\$230 / set	Winter uniform	\$400 / set
School bag	\$51 / each	Tea and snacks	Nil
Textbooks	Nil	Exercise books/ workbooks	Nil
Stationery	Nil	Bedding items	\$112 / set