



**HONG KONG SHENG KUNG HUI LADY  
MACLEHOSE CENTRE (SHEK YAM)  
KINDERGARTEN**

Joining  
2021/22 KG Education Scheme

Kwai Chung &  
Tsing Yi

Address : G/F, COMMERCIAL CENTRE, SHEK YAM ESTATE  
PHASE 2, KWAI CHUNG, NEW TERRITORIES

School No. 564893

Tel. : 2276 5028

Fax. : 2276 5017

Location No. 0001

School Information	
School Category	Non-profit-making
Student Category	Co-educational
Name of School Supervisor	MR KWAN HANG SANG ALEXANDER
Name of School Principal	MS CHUNG MAN CHI
School Founding Year	2001
Total No. of Permitted Accommodation of Classrooms in Use (Data as of Sept. 2020)	123
Number of Registered Classrooms	4
Outdoor Playground	No
Indoor Playground	Yes
Music Room	No
Other Special Room(s) / Area(s)	small activity room
Total No. of Principal & Teaching Staff (Data as of Oct. 2020) *	14
School Website	<a href="http://www.lmcsy.edu.hk">http://www.lmcsy.edu.hk</a>
Quality Review : Result and Report	Meeting the prescribed standards <a href="https://www.edb.gov.hk/attachment/tc/edu-system/preprimary-kindergarten/quality-assurance-frame-work/qr/qr-report/SKH_LadyMaclehoseCtr_SY.pdf">https://www.edb.gov.hk/attachment/tc/edu-system/preprimary-kindergarten/quality-assurance-frame-work/qr/qr-report/SKH_LadyMaclehoseCtr_SY.pdf</a>

No. & Qualification of Principal & Teaching Staff (Data as of Oct. 2020) *	
Academic Qualification	
Degree holders	6
Non-degree holders	8
Professional Qualification	
C(ECE) or above	14
Qualified KG teachers	0
Other teacher trainings	0
Qualified assistant KG teachers	0
Others	0

\* Excluding staff serving aged 0-2

Teacher to Pupil Ratio (Data as of Oct. 2020)	
Teacher to pupil ratio in morning session	1 : 9.4
Teacher to pupil ratio in afternoon session	1 : 9.4
Ratio includes classes aged 2-3	Yes

No. of Enrolment (Data as of Oct. 2020)				
	Nursery	Lower KG	Upper KG	Total
AM Session	0	0	0	0
PM Session	0	0	0	0
WD Session	38	40	42	120

Annual Fees (2021 / 22 School Year)				
		Nursery	Lower KG	Upper KG
Annual Fees After Deduction of Government Subsidy (No. of Instalment)	AM Session	-	-	-
	PM Session	-	-	-
	WD Session	\$4,212 (12)	\$4,212 (12)	\$4,212 (12)

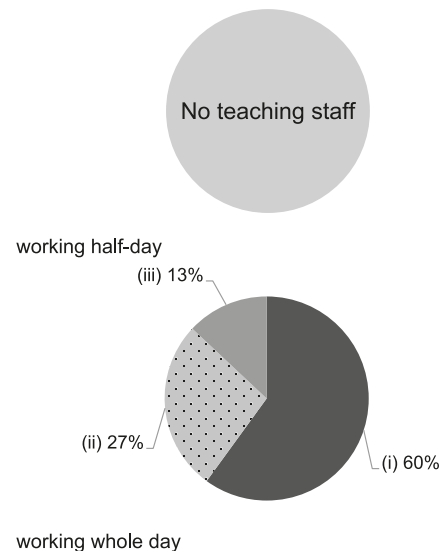
Please refer to the Fees Certificate for details of fees information.

Child Care Services (Data as of Oct. 2020)			
With child care services for children aged 2-3	Yes	With child care services for children aged under 2	No
Fee level (per annum)	(half - day)	No. of enrolment aged 2-3	11
	\$40,104 (full - day)	Joining Child Care Centre Subsidy Scheme	Yes
Providing occasional child care services	No	Providing extended hours services	No

Curriculum Details	
Curriculum type : Local	
Curriculum planning	
<p>We provide an integrated curriculum which cover three important elements, including building knowledge, skills development and cultivating positive attitudes, which finally achieve our objectives of happy learning at school..</p> <p>We will follow the "Kindergarten Education Curriculum Guide" (2017) to plan curriculum. Children of nursery classes will not be asked to write, and there will not be mechanical copying exercises and drills on calculation.</p>	
Learning / Teaching approach & activities	
<p>We use theme learning approach including games, environmental design, small group learning, exploration, projects study and visits to arouse children's learning interests and construct knowledge through practical experience.</p>	
Assessment of children's learning experiences	
<p>We record children's learning progress by continuous observation and learning portfolios.</p>	

Monthly salary range of principal & teaching staff (Data as of Mar. 2021)

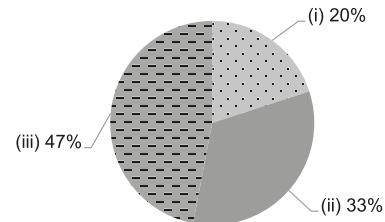
- (i) ≤ \$30,000
- (ii) \$30,001 - \$40,000
- (iii) > \$40,000



School Characteristics	
School vision and mission	
<p>Based on Jesus's love, we are committed to provide high-quality education and care services to children with aims in fostering their all-rounded development in moral, intellectual, physical, social, aesthetic and spiritual aspect. We prepare our students to adapt primary school life and become responsible citizens in future.</p>	
Support to students	
<p>We provide different adaptation plan for new entrants, graduation calss, students with special needs etc..</p>	
Support to non-Chinese speaking (NCS) students	
<p>Appoint additional teaching staff / teaching assistants to support NCS students learning Chinese; facilitate professional development for teachers to develop effective strategies to help NCS students learn Chinese; We assign teachers to attend relevant talks or trainings so as to increase their knowledge on NCS students" learning in Chinese.</p>	
Support to students with special needs	
<p>Joining the On-site Pre-school Rehabilitation Services. We provide an integrated programme to special needs students. We designate a teacher to take care of these students by providing individual and group learning as well as coordinating teaching and training progress with class teacher and related therapists.</p>	
Link with parents	
<p>Parent-teacher association : No</p>	
Other activities / communication with parents	
<p>Parents' day, home school newsletters, parent seminars, visits to primary schools, parents lesson observation and volunteer activities, family picnics, family dental care campaign, family gospel camp, healthy parent-child activities, parent-child reading programs, holiday celebrations, inter-school graduation ceremony and more.</p>	

Working experience of principal & teaching staff in pre-primary education (Data as of Mar. 2021)

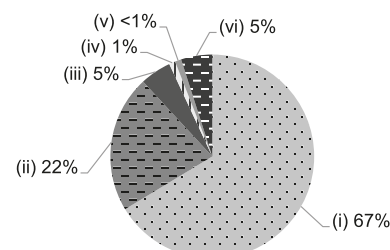
- (i) < 4 years
- (ii) 4 - 7 years
- (iii) > 7 years



2019/20 School Expenditure Information

Expenditure information based on audited account Yes

- (i) salary of principal & teaching staff
- (ii) non-teaching staff salary
- (iii) rent, management fees, rates & government rent
- (iv) teaching resources
- (v) staff training & professional development
- (vi) other expenses



Major Paid Items Reference Price (2020 / 21 School Year)			
Summer uniform	Nil	Winter uniform	Nil
School bag	Nil	Tea and snacks	Nil
Textbooks	Nil	Exercise books/ workbooks	Nil
Stationery	Nil	Bedding items	Nil