



# TSING YI TRADE ASSOCIATION TSEUNG KWAN O KINDERGARTEN

Sai Kung

Address : G/F, BLOCK A, WO YAT HOUSE, WO MING COURT,  
TSEUNG KWAN O, NEW TERRITORIES

Joining  
2021/22 KG Education Scheme

School No. 534153

Location No. 0001

Tel. : 2271 0099

Fax. : 2271 9977

School Information	
School Category	Non-profit-making
Student Category	Co-educational
Name of School Supervisor	MR CHAN CHAN MING
Name of School Principal	MS LAM YIM SHAN
School Founding Year	2000
Total No. of Permitted Accommodation of Classrooms in Use (Data as of Sept. 2020)	300
Number of Registered Classrooms	7
Outdoor Playground	No
Indoor Playground	Yes
Music Room	Yes
Other Special Room(s) / Area(s)	Library, Resource room, Multipurpose room
Total No. of Principal & Teaching Staff (Data as of Oct. 2020) *	18
School Website	<a href="http://www.tsingyitko.edu.hk">http://www.tsingyitko.edu.hk</a>
Quality Review : Result and Report	Meeting the prescribed standards <a href="https://www.edb.gov.hk/attachment/en/edu-system/preprimary-kindergarten/quality-assurance-frame-work/qr/qr-report/TTTA_TKO.pdf">https://www.edb.gov.hk/attachment/en/edu-system/preprimary-kindergarten/quality-assurance-frame-work/qr/qr-report/TTTA_TKO.pdf</a>

No. & Qualification of Principal & Teaching Staff (Data as of Oct. 2020) *	
Academic Qualification	
Degree holders	15
Non-degree holders	3
Professional Qualification	
C(ECE) or above	18
Qualified KG teachers	0
Other teacher trainings	0
Qualified assistant KG teachers	0
Others	0

\* Excluding staff serving aged 0-2

Teacher to Pupil Ratio (Data as of Oct. 2020)	
Teacher to pupil ratio in morning session	1 : 11.7
Teacher to pupil ratio in afternoon session	1 : 9.5
Ratio includes classes aged 2-3	No

No. of Enrolment (Data as of Oct. 2020)				
	Nursery	Lower KG	Upper KG	Total
AM Session	44	55	40	139
PM Session	30	30	30	90
WD Session	16	35	20	71

Annual Fees (2021 / 22 School Year)				
		Nursery	Lower KG	Upper KG
Annual Fees After Deduction of Government Subsidy (No. of Instalment)	AM Session	Free	Free	Free
	PM Session	Free	Free	Free
	WD Session	\$4,336 (11)	\$4,336 (11)	\$4,336 (11)

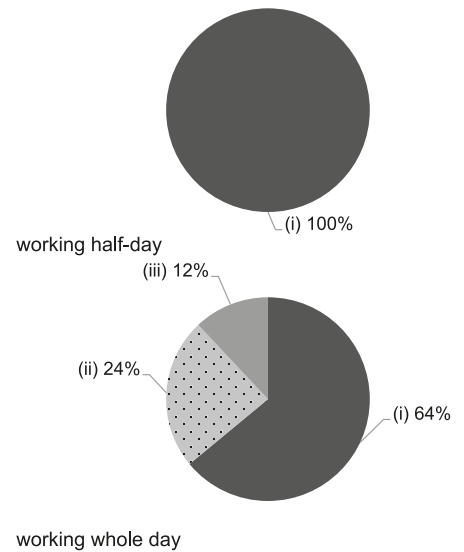
Please refer to the Fees Certificate for details of fees information.

Child Care Services (Data as of Oct. 2020)			
With child care services for children aged 2-3	-	With child care services for children aged under 2	-
Fee level (per annum)	(half - day)	No. of enrolment aged 2-3	0
	(full - day)	Joining Child Care Centre Subsidy Scheme	-
Providing occasional child care services	-	Providing extended hours services	-

Curriculum Details	
Curriculum type : Local	
Curriculum planning	
<p>The child-centred approach builds knowledge through playing are adopted through the child's abilities and interests. The integrated curriculum is supported with multiple stimulating activities to intensify learning.</p>	
<p>We will follow the "Kindergarten Education Curriculum Guide" (2017) to plan curriculum. Children of nursery classes will not be asked to write, and there will not be mechanical copying exercises and drills on calculation.</p>	
Learning / Teaching approach & activities	
<p>Children are guided to build new knowledge through exploration by ways of group learning, topic studies, integrated curriculum, scientific experiments, learning through game corners, IT-aided teaching and site visits.</p>	
Assessment of children's learning experiences	
<p>The "Learning portfolio" is a collective effort contributed by teachers, parents, and students. Teachers will provide a personalized assessment based on the children's participation in class and various activities; students will assess themselves and parents record their home observation. This in turn will provide a track record for the children's development.</p>	

Monthly salary range of principal & teaching staff  
(Data as of Mar. 2021)

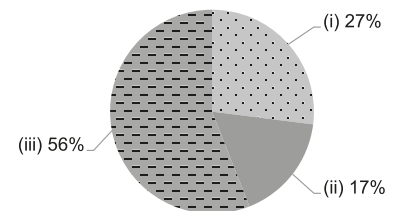
- (i) ≤ \$30,000
- (ii) \$30,001 - \$40,000
- (iii) > \$40,000



School Characteristics	
School vision and mission	
<p>To provide quality kindergarten education and promote healthy physical and psychological developments, foster good living habits, expand social circles, foster higher-level ethnic conceptions, develop the love for group life and promote intellectual development. Which helps to prepare children for primary school life and future growth.</p>	
Support to students	
<p>Students are taught in groups by trained teachers. Those with special learning needs are provided with counselling &amp; support. The scope of community resources is available to students by different government organizations.</p>	
Support to non-Chinese speaking (NCS) students	
<p>We continue to review the school operations, understand the needs of individual children, and seek support from the community &amp; the Education Bureau. And teachers will also receive professional training to enhance their skills in teaching non-Chinese speaking children, and help them learn Chinese quickly and be able to adapt and integrate into the society.</p>	
Support to students with special needs	
<p>For students with special needs, our school will actively support and arrange referral as needed.</p>	
Link with parents	
Parent-teacher association : Yes	
Other activities / communication with parents	
<p>Parents day; home visits; notices; email messages; online notices; telephone conversations; individual interviews; parent-child hiking; various seminars and activities are organized for the parents by the parents-teachers committee for promoting home-school collaboration towards the same goal and jointly lay sound foundation for children's development in all aspects.</p>	

Working experience of principal & teaching staff in pre-primary education  
(Data as of Mar. 2021)

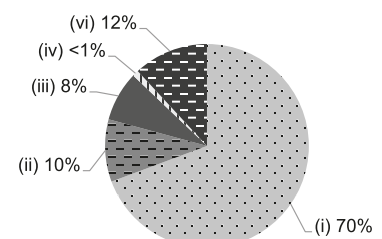
- (i) < 4 years
- (ii) 4 - 7 years
- (iii) > 7 years



2019/20 School Expenditure Information

Expenditure information based on audited account Yes

- (i) salary of principal & teaching staff
- (ii) non-teaching staff salary
- (iii) rent, management fees, rates & government rent
- (iv) teaching resources
- (v) staff training & professional development
- (vi) other expenses



Major Paid Items Reference Price (2020 / 21 School Year)

Summer uniform	\$378 / set	Winter uniform	\$908 / set
School bag	\$96 / each	Tea and snacks	\$1,430 / year
Textbooks	\$638 / year	Exercise books/workbooks	\$371 / year
Stationery	\$56 / year	Bedding items	Nil