



TIVOLI ANGLO-CHINESE KINDERGARTEN

Kwai Chung &
Tsing Yi

Address : G/F, TOWER 4, TIVOLI GARDEN, 75 TSING KING ROAD,
TSING YI, NEW TERRITORIES

Tel. : 2432 6628

Fax. : 2434 4588

Joining
2021/22 KG Education Scheme

School No. 519103

Location No. 0001

School Information	
School Category	Non-profit-making
Student Category	Co-educational
Name of School Supervisor	MR HO KWAI WAH DESMOND
Name of School Principal	MS CHAN KA MUN CARMEN
School Founding Year	1996
Total No. of Permitted Accommodation of Classrooms in Use (Data as of Sept. 2020)	243
Number of Registered Classrooms	7
Outdoor Playground	No
Indoor Playground	Yes
Music Room	Yes
Other Special Room(s) / Area(s)	Multi-purpose Room and special Activity Room
Total No. of Principal & Teaching Staff (Data as of Oct. 2020) *	24
School Website	http://www.kindergarten.edu.hk
Quality Review : Result and Report	Meeting the prescribed standards https://www.edb.gov.hk/attachment/tc/edu-system/preprimary-kindergarten/quality-assurance-frame-work/qr/qr-report/Tivoli_AC.pdf

No. & Qualification of Principal & Teaching Staff (Data as of Oct. 2020) *	
Academic Qualification	
Degree holders	12
Non-degree holders	12
Professional Qualification	
C(ECE) or above	21
Qualified KG teachers	2
Other teacher trainings	0
Qualified assistant KG teachers	0
Others	1

* Excluding staff serving aged 0-2

Teacher to Pupil Ratio (Data as of Oct. 2020)	
Teacher to pupil ratio in morning session	1 : 7.2
Teacher to pupil ratio in afternoon session	1 : 5.9
Ratio includes classes aged 2-3	No

No. of Enrolment (Data as of Oct. 2020)				
	Nursery	Lower KG	Upper KG	Total
AM Session	26	48	56	130
PM Session	26	20	27	73
WD Session	0	1	27	28

Annual Fees (2021 / 22 School Year)				
		Nursery	Lower KG	Upper KG
Annual Fees After Deduction of Government Subsidy (No. of Instalment)	AM Session	Free	Free	Free
	PM Session	Free	Free	Free
	WD Session	\$17,165 (11)	\$17,165 (11)	\$17,165 (11)

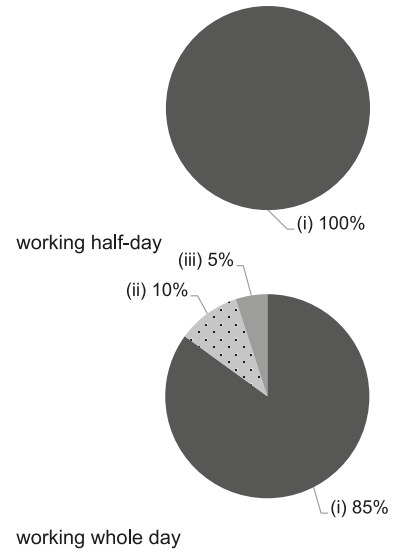
Please refer to the Fees Certificate for details of fees information.

Child Care Services (Data as of Oct. 2020)			
With child care services for children aged 2-3	-	With child care services for children aged under 2	-
Fee level (per annum)	(half - day)	No. of enrolment aged 2-3	0
	(full - day)	Joining Child Care Centre Subsidy Scheme	-
Providing occasional child care services	-	Providing extended hours services	-

Curriculum Details	
Curriculum type : Local	
Curriculum planning	
<p>At Tivoli, we place a strong emphasis on language development. Multilingual proficiency provides children with a gateway to numerous cultures and opportunities, broadening both their horizon and social network. We employ qualified native English speakers to teach English at both our Anglo-Chinese Kindergarten (local curriculum) and International Playschool (non-local curriculum). Similarly, all our Putonghua teachers are native speakers who have passed the National Putonghua Proficiency Test. By immersing children in a language-rich environment, we hope that they can learn to communicate effectively and naturally both in English and Putonghua.</p>	
<p>We will follow the "Kindergarten Education Curriculum Guide" (2017) to plan curriculum. Children of nursery classes will not be asked to write, and there will not be mechanical copying exercises and drills on calculation.</p>	
Learning / Teaching approach & activities	
<p>We use an integrated approach in conjunction with efficient and rich learning centres in each classroom which includes areas such as Language, Reading, Math and Science, etc. The activities in each centre have clear objectives providing diversified learning materials with various levels of difficulty, which children are allowed to choose freely according to their own ability and interest. In addition, we adopt the positive discipline approach to foster and develop children's responsibility, self-discipline, problem-solving and cooperation skills.</p>	
Assessment of children's learning experiences	
<p>To monitor the learning effectiveness of children through continuous observations, including their works, academic and emotional records, conversation logs and home assessment by parents.</p>	

Monthly salary range of principal & teaching staff (Data as of Mar. 2021)

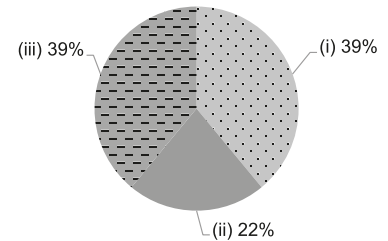
- (i) ≤ \$30,000
- (ii) \$30,001 - \$40,000
- (iii) > \$40,000



School Characteristics	
School vision and mission	
<p>Tivoli strives to provide all young learners of all nationalities, languages and cultural backgrounds with equal opportunities to holistically develop their potential in becoming responsible, respectful and reflective global citizens in order to equip them to tackle their unforeseeable challenges in the future.</p>	
Support to students	
<p>We will provide professional support and referral service upon request.</p>	
Support to non-Chinese speaking (NCS) students	
<p>Received Grant for Support to NCS Students; appoint additional teaching staff / teaching assistants to support NCS students learning Chinese; arrange interpretation / translation services; create an enriched language environment for mastery of the Chinese language; create an inclusive learning environment to facilitate students' integration; collaborate with non-governmental organisations (NGOs) to create an inclusive learning environment; facilitate professional development for teachers to develop effective strategies to help NCS students learn Chinese.</p>	
Support to students with special needs	
<p>Joining the On-site Pre-school Rehabilitation Services.</p>	
Link with parents	
<p>Parent-teacher association : No</p>	
Other activities / communication with parents	
<p>Brithday Party without cake, google classroom, Parent's Day, Parent-Child Sports Day, Love & Care Christmas Show, Family-school Field Trip, the Reading Tree Scheme, Parent education Talks, Parent-school partnerships and the Safety & Healthy Ambassador Program.</p>	

Working experience of principal & teaching staff in pre-primary education (Data as of Mar. 2021)

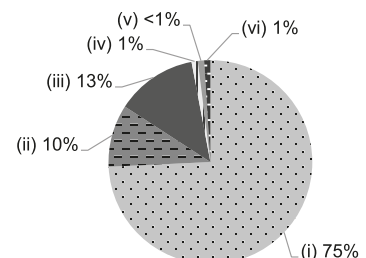
- (i) < 4 years
- (ii) 4 - 7 years
- (iii) > 7 years



2019/20 School Expenditure Information

Expenditure information based on audited account Yes

- (i) salary of principal & teaching staff
- (ii) non-teaching staff salary
- (iii) rent, management fees, rates & government rent
- (iv) teaching resources
- (v) staff training & professional development
- (vi) other expenses



Major Paid Items Reference Price (2020 / 21 School Year)			
Summer uniform	\$190 / set	Winter uniform	\$535 / set
School bag	\$90 / each	Tea and snacks	\$1,848 / year
Textbooks	Nil	Exercise books/workbooks	Nil
Stationery	Nil	Bedding items	Nil