



# YUEN LONG LUTHERAN LIFE KINDERGARTEN

Yuen Long

Address : LOTS 3713 & 3714 IN DD 120, ON SHUN STREET,  
YUEN LONG, NEW TERRITORIES

Joining  
2021/22 KG Education Scheme

School No. 155624

Location No. 0001

Tel. : 2476 9363

Fax. : 2479 3005

School Information	
School Category	Non-profit-making
Student Category	Co-educational
Name of School Supervisor	MADAM YEUNG MEI YUK YAMI
Name of School Principal	MS LAW CHUNG YING
School Founding Year	1974
Total No. of Permitted Accommodation of Classrooms in Use (Data as of Sept. 2020)	540
Number of Registered Classrooms	9
Outdoor Playground	Yes
Indoor Playground	Yes
Music Room	Yes
Other Special Room(s) / Area(s)	Group Activity Room, Reading Room
Total No. of Principal & Teaching Staff (Data as of Oct. 2020) *	31
School Website	<a href="http://www.lifekg.edu.hk">http://www.lifekg.edu.hk</a>
Quality Review : Result and Report	Meeting the prescribed standards <a href="https://www.edb.gov.hk/attachment/en/edu-system/preprimary-kindergarten/quality-assurance-frame-work/qr/qr-report/YuenLong_LutheranLife.pdf">https://www.edb.gov.hk/attachment/en/edu-system/preprimary-kindergarten/quality-assurance-frame-work/qr/qr-report/YuenLong_LutheranLife.pdf</a>

No. & Qualification of Principal & Teaching Staff (Data as of Oct. 2020) *	
Academic Qualification	
Degree holders	25
Non-degree holders	6
Professional Qualification	
C(ECE) or above	30
Qualified KG teachers	1
Other teacher trainings	0
Qualified assistant KG teachers	0
Others	0

\* Excluding staff serving aged 0-2

Teacher to Pupil Ratio (Data as of Oct. 2020)	
Teacher to pupil ratio in morning session	1 : 8.7
Teacher to pupil ratio in afternoon session	1 : 8.7
Ratio includes classes aged 2-3	No

No. of Enrolment (Data as of Oct. 2020)				
	Nursery	Lower KG	Upper KG	Total
AM Session	90	90	90	270
PM Session	90	90	90	270
WD Session	0	0	0	0

Annual Fees (2021 / 22 School Year)				
		Nursery	Lower KG	Upper KG
Annual Fees After Deduction of Government Subsidy (No. of Instalment)	AM Session	Free	Free	Free
	PM Session	Free	Free	Free
	WD Session	-	-	-

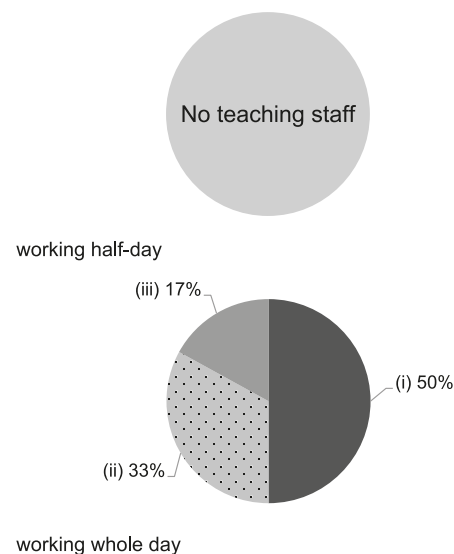
Please refer to the Fees Certificate for details of fees information.

Child Care Services (Data as of Oct. 2020)			
With child care services for children aged 2-3	-	With child care services for children aged under 2	-
Fee level (per annum)	(half - day)	No. of enrolment aged 2-3	0
	(full - day)	Joining Child Care Centre Subsidy Scheme	-
Providing occasional child care services	-	Providing extended hours services	-

Curriculum Details	
Curriculum type : Local	
Curriculum planning	
<p>We design child-oriented curriculum according to children's developmental needs and six major areas of learning. We stimulate our children's initiative to learn by themselves through character development.</p> <p>We will follow the "Kindergarten Education Curriculum Guide" (2017) to plan curriculum. Children of nursery classes will not be asked to write, and there will not be mechanical copying exercises and drills on calculation.</p>	
Learning / Teaching approach & activities	
<p>Different teaching approaches will be used, including integrated story talking, brain basic teaching skill, project learning, religion, life education and moral education. We adopt whole group circle time, small group learning and personalized learning times. We arrange activities in and out of school, outdoor visits, exploration activities, parent-child assignments, etc., that are associated with the subject, to enable children to learn from games.</p>	
Assessment of children's learning experiences	
<p>We use continuous observations assessments and children's personal learning portfolios to record their learning and growth.</p>	

Monthly salary range of principal & teaching staff (Data as of Mar. 2021)

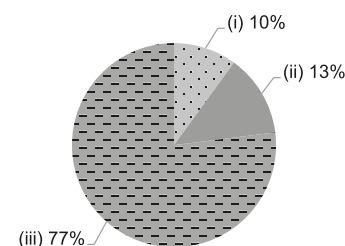
- (i) ≤ \$30,000
- (ii) \$30,001 - \$40,000
- (iii) > \$40,000



School Characteristics	
School vision and mission	
<p>In the spirit of Christ's love for others, we devote ourselves to children's spiritual development. According to the theory of early childhood education, we practice holistic education for balanced development of our children in moral, intellectual, physical, social, aesthetic and spiritual aspects. We are committed to nurture children's physical and mental growth and inspire their potentials to cater for their development needs.</p>	
Support to students	
<p>In-school social workers, Pilot scheme on On-Site Pre-School Rehabilitation Services, Association Foundation Social Service, New Students Adaption Period, Entrance Orientation Program, primary school visits, P.1 Adaption activities, community activities, and caring for, visits to or referral, families with special needs. Interest Classes are held in the affiliated social service center. The Life Chapel holds the Sunday School and other religious activities to assist children in their spiritual development.</p>	
Support to non-Chinese speaking (NCS) students	
No information	
Support to students with special needs	
We arrange pre-school rehabilitation service for special needs students.	
Link with parents	
Parent-teacher association : Yes	
Other activities / communication with parents	
<p>Parents Day, Parent-Child Activities and Parent-Child School Picnic, Seminars, Parent Growth Team, Parents' Classes, Parents Storytelling Workshop, Parents' Fellowship, Parents' Computer Classes, Family Praise, Parents Bible Study, Parents-child reading, Parent-Child Game Day, Parent-Teacher Association Library and Book Borrowing, Parent Newsletters, etc.</p>	

Working experience of principal & teaching staff in pre-primary education (Data as of Mar. 2021)

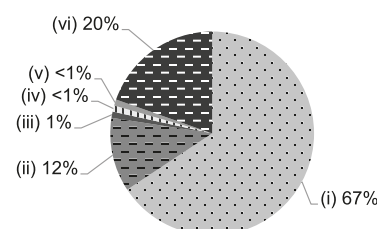
- (i) < 4 years
- (ii) 4 - 7 years
- (iii) > 7 years



2019/20 School Expenditure Information

Expenditure information based on audited account Yes

- (i) salary of principal & teaching staff
- (ii) non-teaching staff salary
- (iii) rent, management fees, rates & government rent
- (iv) teaching resources
- (v) staff training & professional development
- (vi) other expenses



Major Paid Items Reference Price (2020 / 21 School Year)			
Summer uniform	\$352 / set	Winter uniform	\$853 / set
School bag	\$113 / each	Tea and snacks	\$1,204 / year
Textbooks	Nil	Exercise books/ workbooks	\$300 / year
Stationery	\$0 / year	Bedding items	\$0 / set