



THE CHURCH OF CHRIST IN CHINA CHEUNG CHAU CHURCH KAM KONG KINDERGARTEN

Joining
2021/22 KG Education Scheme

Islands

Address : 14 SCHOOL ROAD, CHEUNG CHAU, NEW TERRITORIES

School No. 151424

Tel. : 2981 2223

Fax. : 2986 8066

Location No. 0001

School Information	
School Category	Non-profit-making
Student Category	Co-educational
Name of School Supervisor	MS CHUNG LAI PING
Name of School Principal	MS LAM OI LEE HIPPO
School Founding Year	1960
Total No. of Permitted Accommodation of Classrooms in Use (Data as of Sept. 2020)	146
Number of Registered Classrooms	8
Outdoor Playground	Yes
Indoor Playground	Yes
Music Room	Yes
Other Special Room(s) / Area(s)	No information
Total No. of Principal & Teaching Staff (Data as of Oct. 2020) *	15
School Website	http://www.kamkongkg.edu.hk
Quality Review : Result and Report	Meeting the prescribed standards https://www.edb.gov.hk/attachment/en/edu-system/preprimary-kindergarten/quality-assurance-frame-work/qr/qr-report/CCC_CheungChauCh_KamKong.pdf

No. & Qualification of Principal & Teaching Staff (Data as of Oct. 2020) *	
Academic Qualification	
Degree holders	6
Non-degree holders	9
Professional Qualification	
C(ECE) or above	13
Qualified KG teachers	1
Other teacher trainings	0
Qualified assistant KG teachers	1
Others	0

* Excluding staff serving aged 0-2

Teacher to Pupil Ratio (Data as of Oct. 2020)	
Teacher to pupil ratio in morning session	1 : 8.3
Teacher to pupil ratio in afternoon session	1 : 7.2
Ratio includes classes aged 2-3	Yes

No. of Enrolment (Data as of Oct. 2020)				
	Nursery	Lower KG	Upper KG	Total
AM Session	8	9	9	26
PM Session	0	0	0	0
WD Session	30	26	32	88

Annual Fees (2021 / 22 School Year)				
		Nursery	Lower KG	Upper KG
Annual Fees After Deduction of Government Subsidy (No. of Instalment)	AM Session	Free	Free	Free
	PM Session	Free	Free	Free
	WD Session	\$10,967 (11)	\$10,967 (11)	\$10,967 (11)

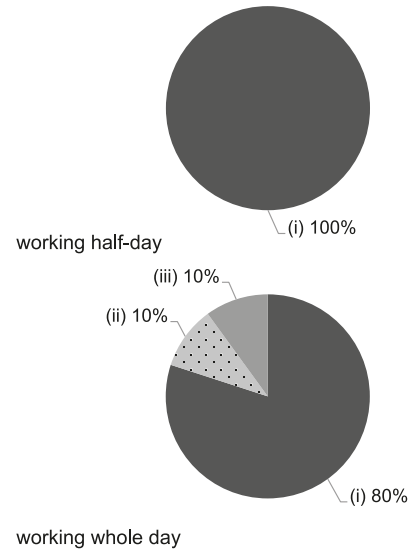
Please refer to the Fees Certificate for details of fees information.

Child Care Services (Data as of Oct. 2020)			
With child care services for children aged 2-3	Yes	With child care services for children aged under 2	No
Fee level (per annum)	\$37,944 (half - day)	No. of enrolment aged 2-3	10
	\$66,996 (full - day)	Joining Child Care Centre Subsidy Scheme	No
Providing occasional child care services	No	Providing extended hours services	No

Curriculum Details	
Curriculum type : Local	
Curriculum planning	
<p>Our curriculum is compiled according children's life experience and ability. We structure our curriculum by adopting various theories such as intergrated curriculu, the project approach and multiple intelligences. We aim to inspire children's thinking ability and to foster their initiative for learning.</p>	
<p>We will follow the "Kindergarten Education Curriculum Guide" (2017) to plan curriculum. Children of nursery classes will not be asked to write, and there will not be mechanical copying exercises and drills on calculation.</p>	
Learning / Teaching approach & activities	
<p>We put an emphasis on biliteracy and trilingualism. We let children learn English and Putonghua through play. The school offers various learning models, such as project-based learning, community visits and small-group activities, for children to learn in a happy environment.</p>	
Assessment of children's learning experiences	
<p>Continuous observation of student 's learning for assessment.</p>	

Monthly salary range of principal & teaching staff (Data as of Mar. 2021)

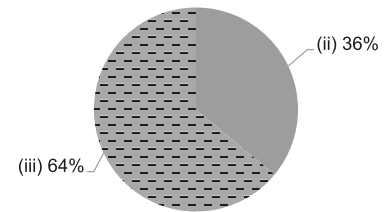
- (i) ≤ \$30,000
- (ii) \$30,001 - \$40,000
- (iii) > \$40,000



School Characteristics	
School vision and mission	
<p>Together we nurture the life of our students; Hand in hand we witness the Love of Christ. We are willing to be driven by the Love of Christ to provide quality education and to develop children's potential with a child-oriented philosophy and a positive, can-do attitude, so as to share the holistic gospel. We nurture students to become good citizens, so as to give back to our society and to contribute to our country. We provide missionary service with love and care. We provide holistic education without discrimination. We are positive, ambitious and willing to take up responsibilities.</p>	
Support to students	
<p>New student adaption period, primary one class simulation for K3 students, summer workshops, participation in community activities, home visits, referral of children with special needs to professional centres for therapy, etc. We employ foreign and Putonghua teachers to tie in with the biliterate and trilingual teaching.</p>	
Support to non-Chinese speaking (NCS) students	
<p>No information</p>	
Support to students with special needs	
<p>On-site support services provide speech therapy and occupational therapy.</p>	
Link with parents	
<p>Parent-teacher association : Yes</p>	
Other activities / communication with parents	
<p>Parents' day, seminars, parent-child outings, parent-child sports day, graduation dinners, carnivals, parents' small group meetings and home visits.</p>	

Working experience of principal & teaching staff in pre-primary education (Data as of Mar. 2021)

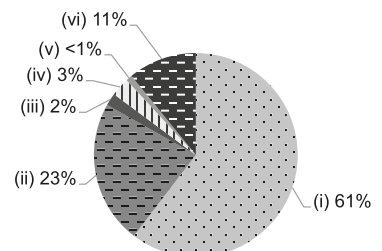
- (i) < 4 years
- (ii) 4 - 7 years
- (iii) > 7 years



2019/20 School Expenditure Information

Expenditure information based on audited account Yes

- (i) salary of principal & teaching staff
- (ii) non-teaching staff salary
- (iii) rent, management fees, rates & government rent
- (iv) teaching resources
- (v) staff training & professional development
- (vi) other expenses



Major Paid Items Reference Price (2020 / 21 School Year)			
Summer uniform	\$105 / set	Winter uniform	\$105-250 / set
School bag	\$138 / each	Tea and snacks	\$1,100 / year
Textbooks	\$500-600 / year	Exercise books/workbooks	\$400-500 / year
Stationery	Nil	Bedding items	Nil